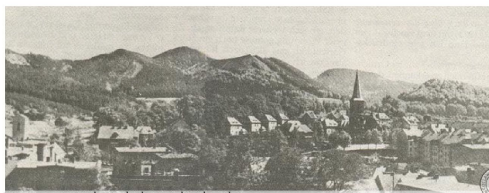


Revitalization of Podgórze district in Wałbrzych



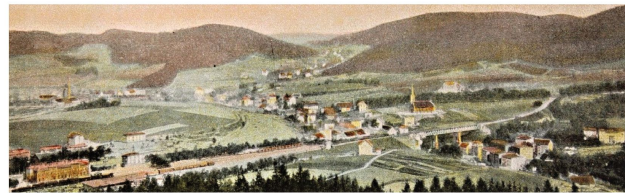
Google maps



https://podgorze.pl



https://podgorze.pl



https://podgorze.pl

HISTORY AND GENERAL INFORMATION ABOUT THE DISTRICT

Podgórze - a former village, now lying in the southern part of Wałbrzych district, Podgórze is located in the upper part of the Pełcznica River, along the Black Mountains range.

It was first mentioned in 1305. Tradition associates the village's establishment with the castle town of Zamkowa Góra, but the name's off-name indicates that it may have been a settled village. In the 15th century it belonged to the Schaffgotsch family, and later to the Czetrizow family. Its inhabitants were engaged in agriculture and cottage weaving, and also, from the mid-17th century, in mining.

After the decommissioning of the mine at the end of the 20th century, Podgórze visibly declined and today is one of the more neglected districts of Wałbrzych. Currently, the district is included in Wałbrzych's municipal revitalization program for 2016-2025.

The Podgórze district includes:

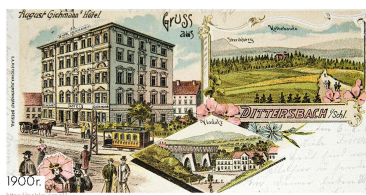
- Osiedle Słoneczne - the area around the intersection of Świdnicka and 11 Listopada streets, also known as the Park Estate,
- Podzamcze - the area around the New House colony, under the ruins of the Nowy Dwór castle,
- Swiss Valley
- Lucky God Estate

According to data from the Wałbrzych City Hall, as of April 16, 2014, the district of Podgórze is inhabited by 8892 people.

Podgórze is located along Niepodległości Street (a section of National Road No. 35), passing in the south into Wałbrzyska Street towards Glinik Nowy and on to the Czech border, and in the north into Mickiewicza Street towards Downtown. To the east, Świdnicka Street, which is part of Voivodeship Road No. 379 and leads to Kozice and further to Świdnica, among other places. The western bypass of Wałbrzych (a section of National Road No. 35) also runs through the district.

In the south part of the district is the Wałbrzych Central Railway Station, which is the largest and one of the highest mountain stations in Poland, and used to be an important railroad junction, especially for freight transport. Podgórze is an important place on the map of Sudetenland trails. At the Wałbrzych Central Railway Station there is a junction where four trails begin.

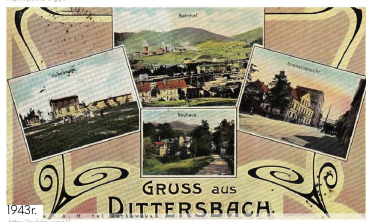
Currently, Podgórze is connected with downtown and other districts of Wałbrzych by bus lines A, 11 and 12, as well as private transport line 6.



https://podgorze.pl



https://podgorze.pl

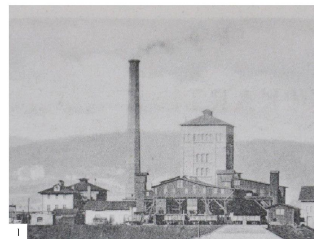


https://podgorze.pl

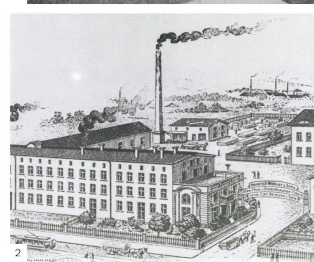
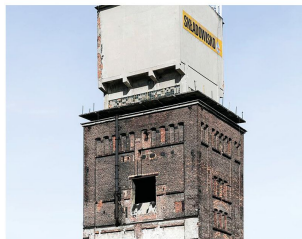
INDUSTRY AND HERITAGE

Currently, there are several industrial plants in Podgórze, including the „Camela” Clothing Insert Factory and PUPH „Dornpol”. Formerly, the district was home to, among others:

1. Mieszka Coal Mine (formerly Melchior, von Kulmiz), Mining Street - operated from 1840 to 1992. Of the mine buildings, only two shafts have survived to the present: Staszic East, West, on Górnicka Street and the Air Shaft on Świdnicka Street.
2. Chamotte Products Factory and Legnickie Zakłady Ceramiki Budowlanej (Tile Factory), 52-54 Niepodległości Street.
3. The old evangelical church
4. Train viaduct



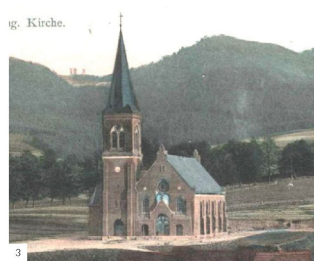
1



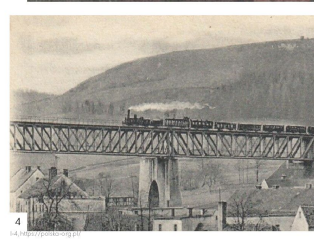
2



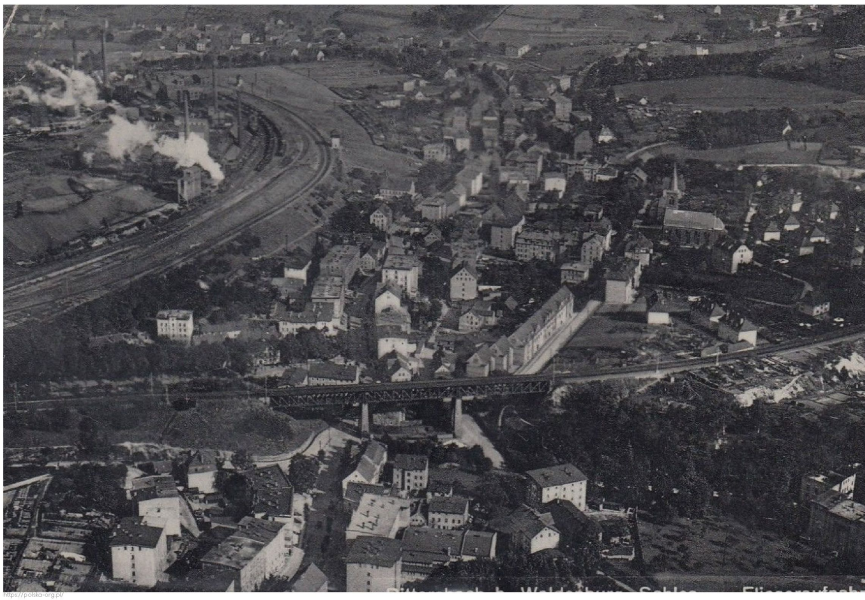
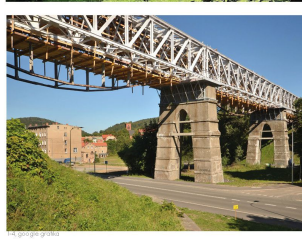
3g. Kirche.



3



4



https://podgorze.pl

Revitalization of Podgórze district in Wałbrzych

INVENTORY OF PODGÓRZE DISTRICT / PHOTOS FROM THE SITE VISIT



Google maps and private photos

INVENTORY OF PODGÓRZE DISTRICT



map obtained from city data shared by Wałbrzych's council

INVENTORY OF PODGÓRZE DISTRICT / RECENT INTERVENTIONS



Google maps and private photos

LEGEND



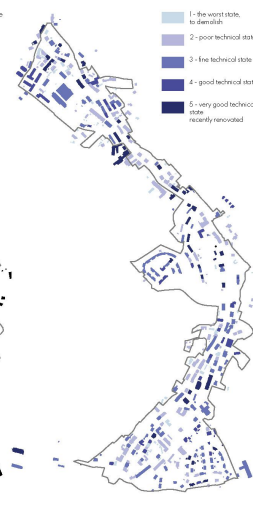
MONUMENTS DIAGRAM

monuments on the site



TECHNICAL STATE

- 1 - the worst state, to demolish
- 2 - poor technical state
- 3 - fine technical state
- 4 - good technical state
- 5 - very good technical state, recently renovated



VALORISATION

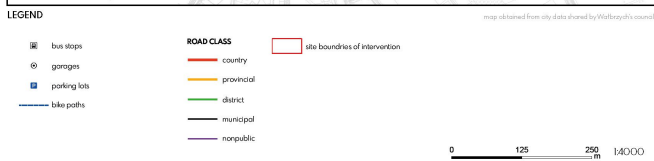
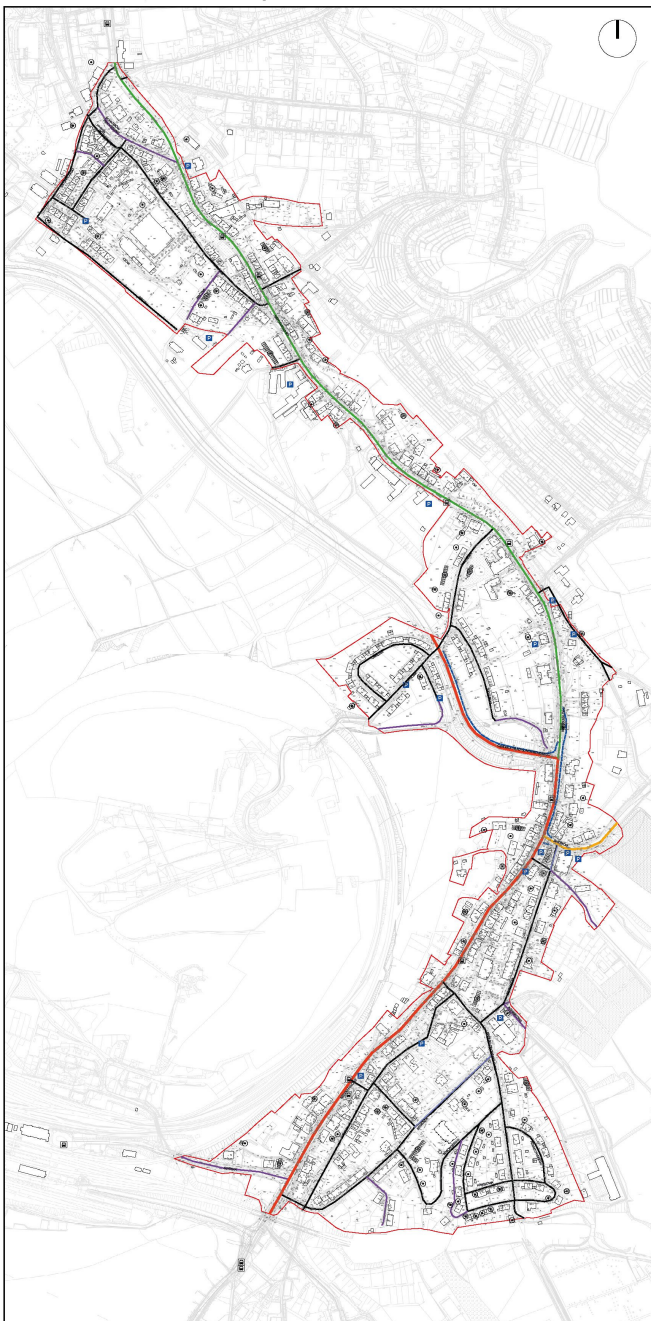
- 1 - buildings with negative impact
- 2 - buildings with a lack of positive impact
- 3 - buildings with neutral impact
- 4 - buildings worth preserving
- 5 - the most valuable buildings



scale / 1:10 000

Revitalization of Podgórze district in Wałbrzych

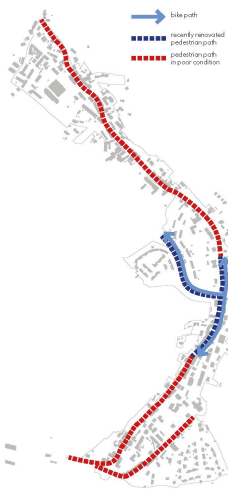
ANALYSIS OF PODGÓRZE DISTRICT / COMMUNICATION



ANALYSIS OF PODGÓRZE DISTRICT / GREENERY



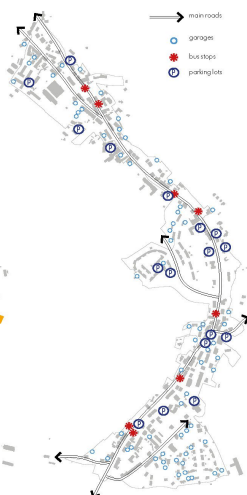
BIKE/PEDESTRIAN PATHS DIAGRAM



DENSITY OF TRAFFIC ON MAIN ROADS DIAGRAM



PARKINGS, BUS STOPS, GARAGES DIAGRAM



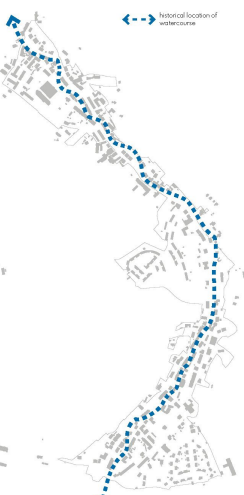
DISTRIBUTION OF GREENERY DIAGRAM



PARKS AND ORGANISED GREEN AREAS DIAGRAM

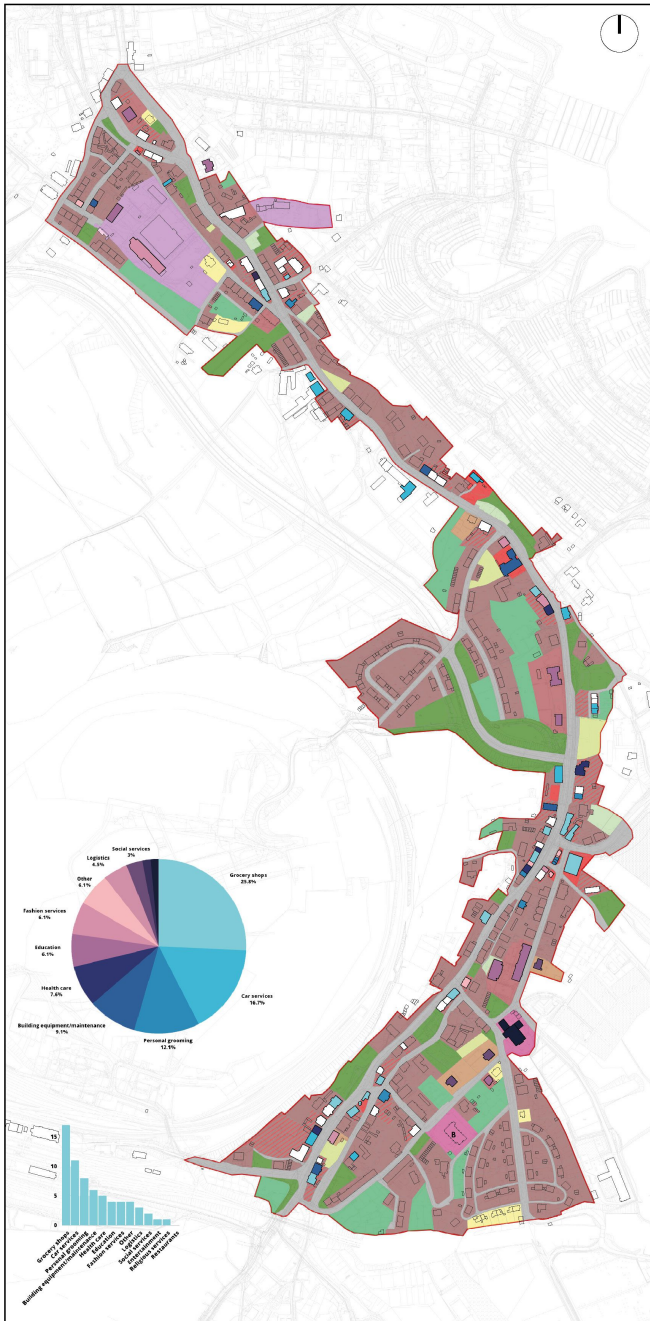


WATER ON SITE DIAGRAM

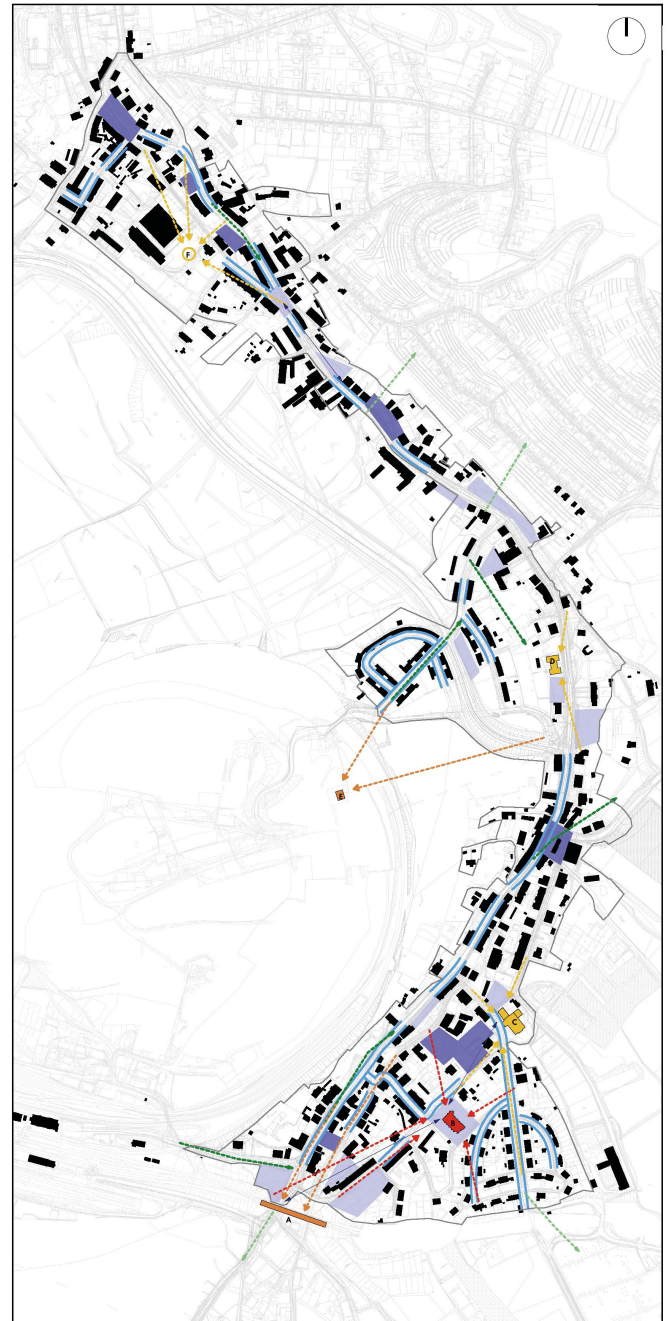


Revitalization of Podgórze district in Wałbrzych

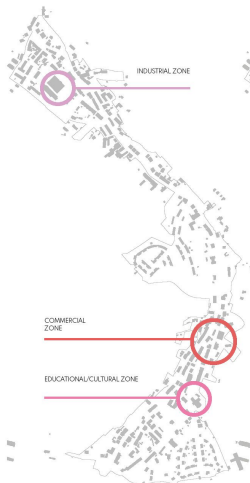
ANALYSIS OF PODGÓRZE DISTRICT / FUNCTION



ANALYSIS OF PODGÓRZE DISTRICT / COMPOSITION



LOCAL CENTERS DIAGRAM



PUBLIC SERVICE DIAGRAM



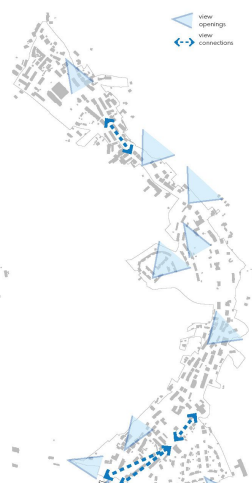
DENSITY OF HOUSING DIAGRAM



DOMINANTS AND AXES DIAGRAM



VIEWS DIAGRAM

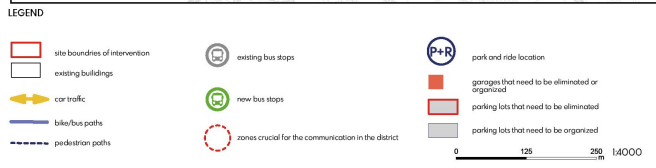
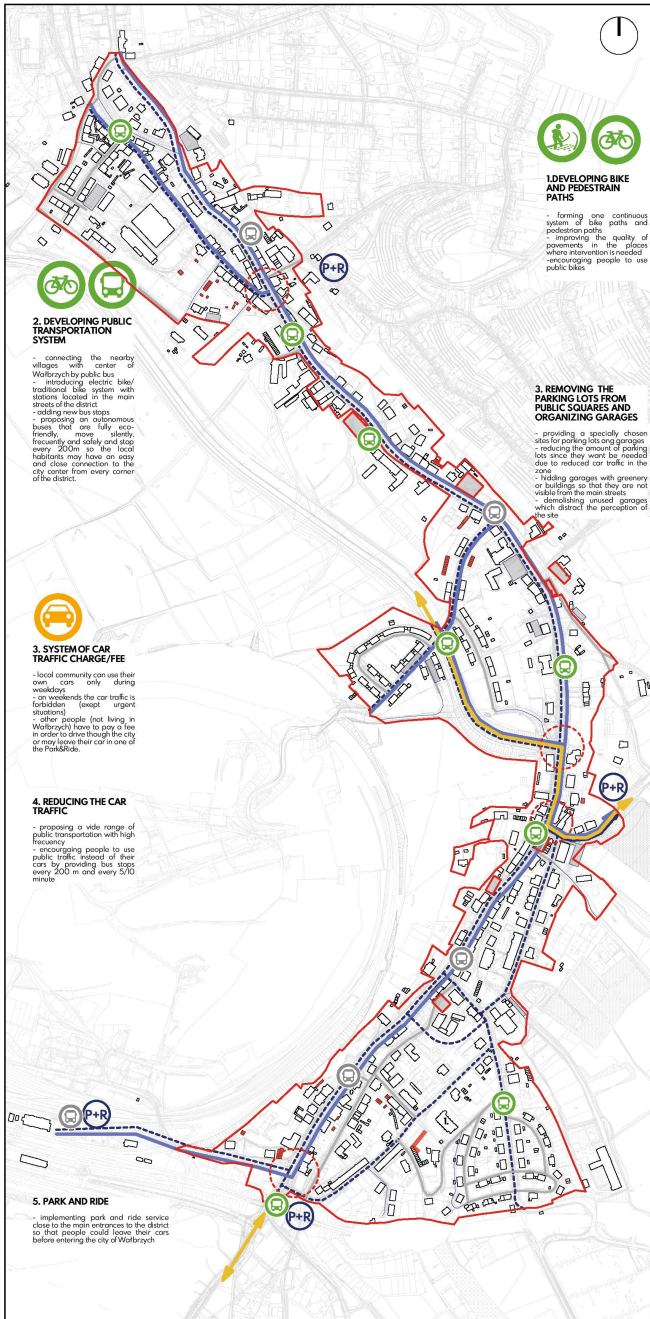


URBAN INTERIORS AND FRONTAGES DIAGRAM

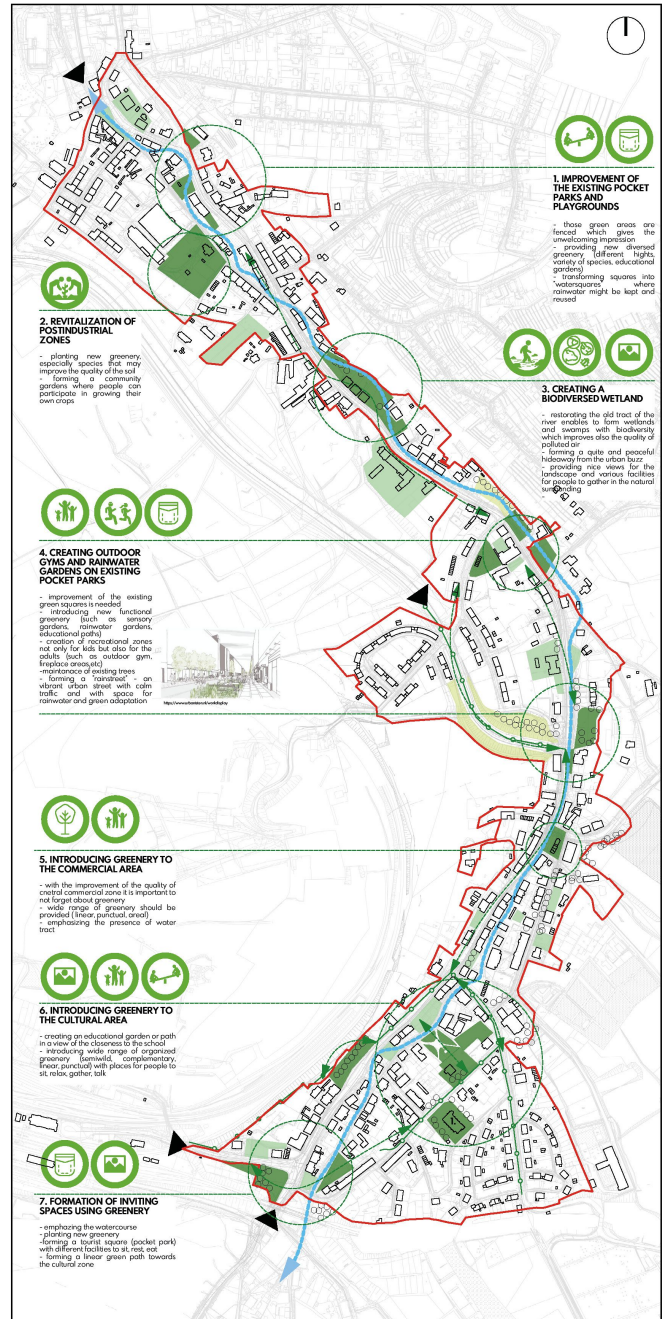


Revitalization of Podgórze district in Wałbrzych

STRATEGIES FOR THE REVITALIZATION/ COMMUNICATION



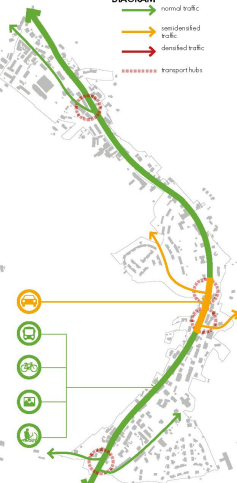
STRATEGIES FOR THE REVITALIZATION / GREENERY



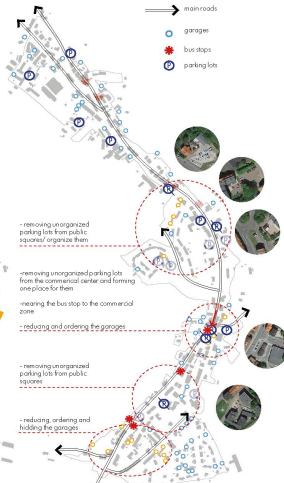
BIKE/PEDESTRIAN PATHS DIAGRAM



DENSITY OF TRAFFIC ON MAIN ROADS DIAGRAM



PARKINGS, BUS STOPS, GARAGES DIAGRAM



DISTRIBUTION OF GREENERY DIAGRAM



PARKS AND ORGANISED GREEN AREAS DIAGRAM

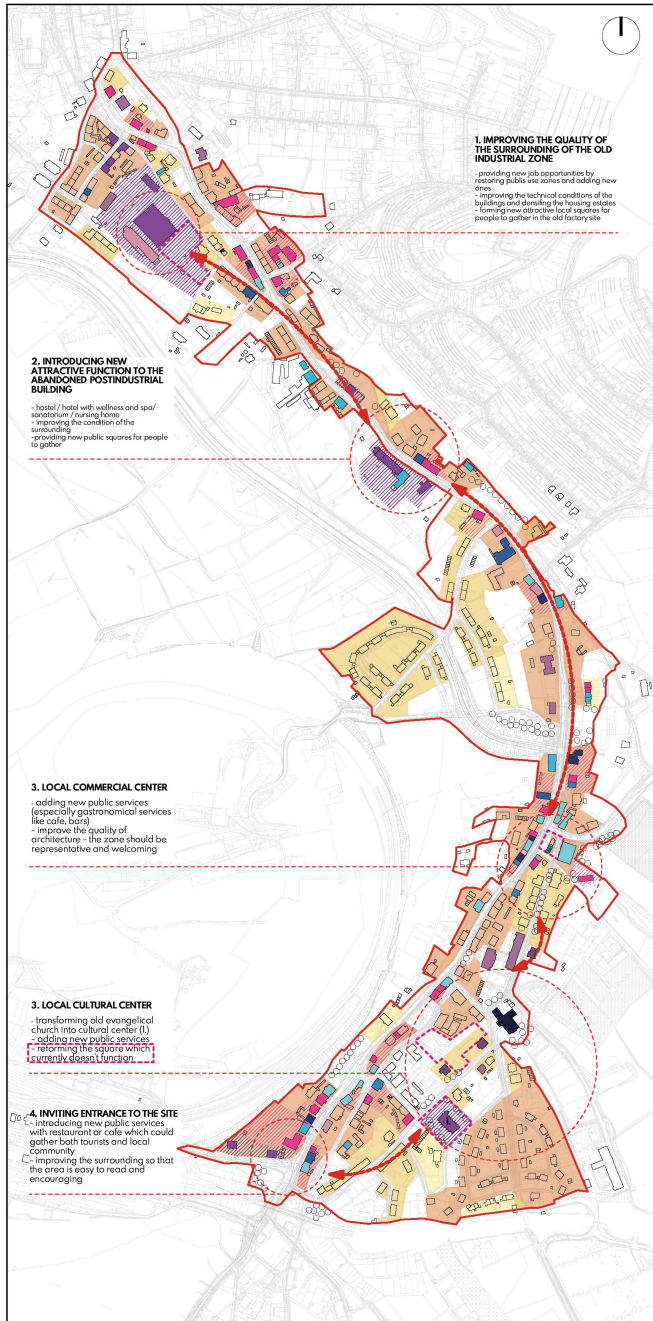


WATER ON SITE DIAGRAM

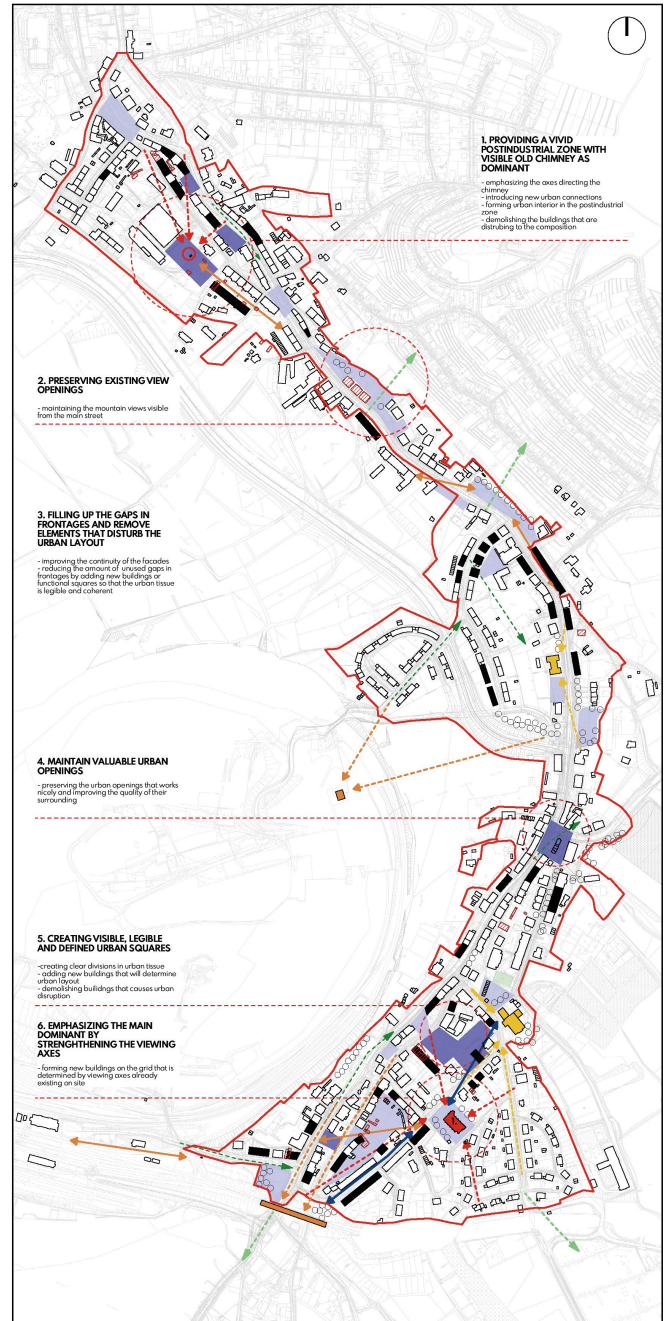


Revitalization of Podgórze district in Wałbrzych

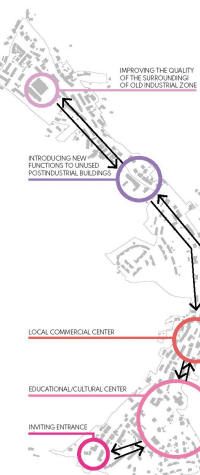
STRATEGIES FOR REVITALIZATION / FUNCTION



STRATEGIES FOR REVITALIZATION / COMPOSITION



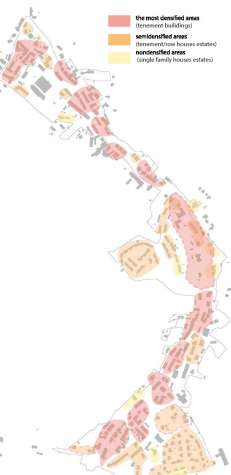
LOCAL CENTERS DIAGRAM



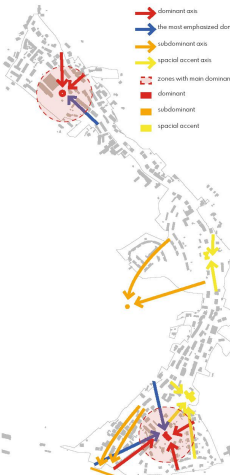
PUBLIC SERVICE DIAGRAM



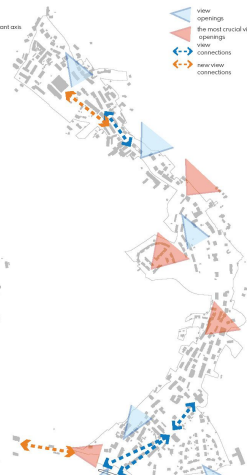
DENSITY OF HOUSING DIAGRAM



DOMINANTS AND AXES DIAGRAM



VIEW DIAGRAM



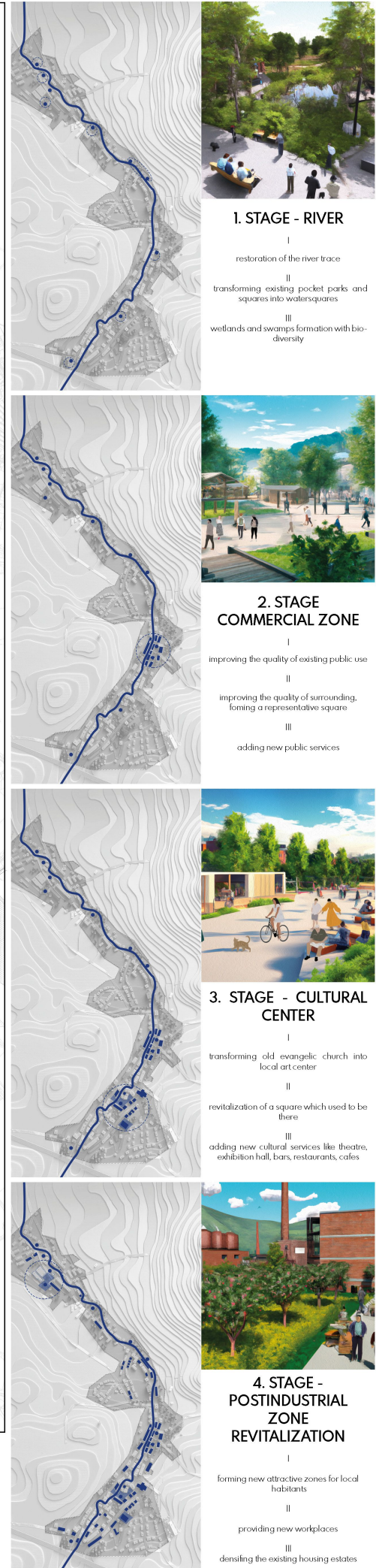
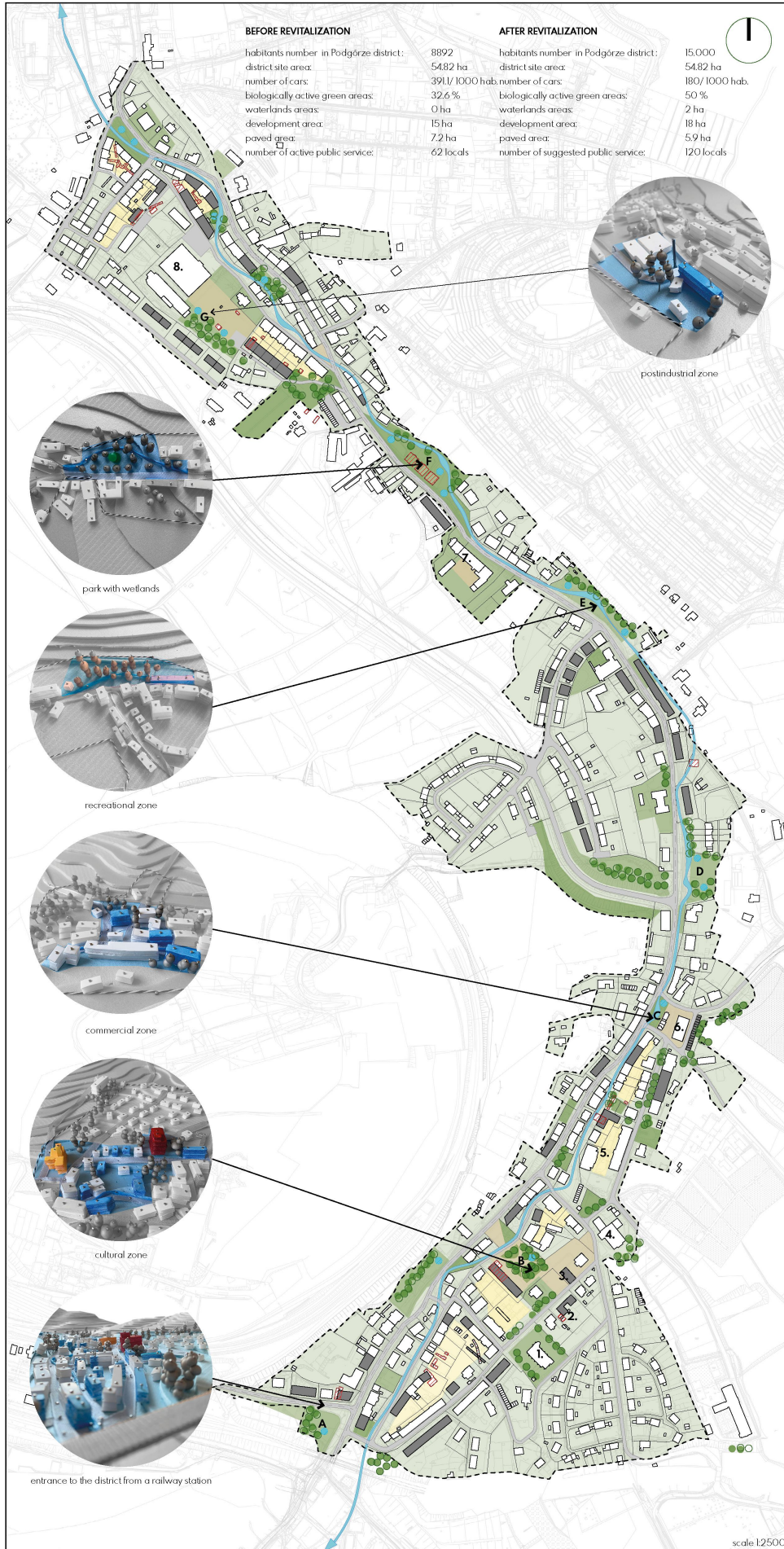
URBAN INTERIORS AND FRONTAGES DIAGRAM



Revitalization of Podgórze district in Wałbrzych

MASTERPLAN

STAGES OF THE REVITALIZATION PROCESS



LEGEND

site boundaries of intervention	roads (bus, bike, pedestrian, car)	squares with organized and functional greenery	trees
plot divisions	residential yards	rainwater collectors in watersquares	DEVELOPMENT OF SPECIFIC BUILDINGS CRUCIAL FOR REVITALIZATION PROCESS
existing buildings	parks, green squares	REVITALIZED SQUARES AND POCKET PARKS	
new buildings	public squares	A - tourists' square (pocket park)	1 - local art center
buildings to demolishing	building plots	B - little forest square (for social events)	2 - retirement home
		C - commercial square	3 - theatre / cinema
		D - rainwater garden	4 - St. Frank church
		E - outdoor gym (pocket park)	5 - primary school
		F - biodiverse wetland park	6 - commercial center
		G - community garden	7 - wellness and spa center
			8 - new offices

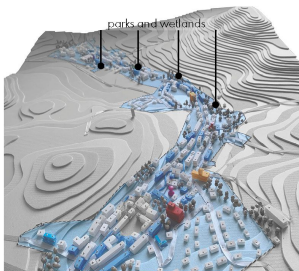
Revitalization of Podgórze district in Wałbrzych

THE RIVER AND WETLANDS



Urban wetlands are important for cities due to several reasons:

- 1. Flood mitigation:** They absorb excess rainfall, reducing the risk of urban flooding.
- 2. Water purification:** Wetlands filter pollutants and improve water quality.
- 3. Biodiversity conservation:** They provide habitat for diverse species, supporting wildlife and conservation efforts.
- 4. Climate regulation:** Wetlands store carbon and help regulate urban temperatures.
- 5. Recreation and cultural value:** They offer recreational spaces and have cultural significance.
- 6. Ecosystem services:** Wetlands contribute to water regulation, groundwater recharge, and soil fertility.

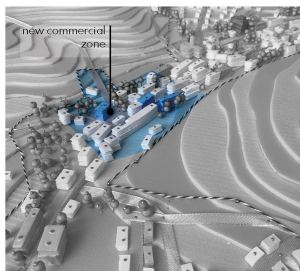


COMMERCIAL ZONE



Revitalization of commercial zones in cities is crucial for several reasons:

- 1. Economic growth:** Commercial zones serve as engines of economic activity, attracting businesses, creating job opportunities, and stimulating local economies.
- 2. Urban renewal:** Commercial zones often form the heart of urban areas, and their revitalization can enhance the overall appearance and attractiveness of the city.
- 3. Community development:** Revitalization efforts can enhance the quality of life for local communities by improving access to shopping, dining, entertainment. It can also create spaces for community gatherings and social interaction.
- 4. Sustainability and smart growth:** Designing walkable and bike-friendly commercial areas, promoting public transportation, and utilizing energy-efficient infrastructure. Such approaches can reduce traffic, improve air quality, and create more environmentally friendly urban environments.

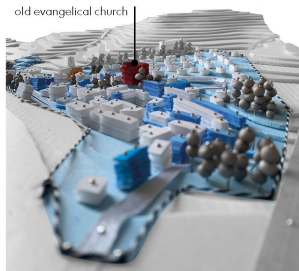


CULTURAL ZONE



Revitalizing cultural zones in cities is important due to the following reasons:

- 1. Preservation of heritage:** Cultural zones are often home to historical landmarks, architectural gems, and culturally significant sites. Revitalization efforts ensure the preservation and conservation of these important elements of a city's history and cultural identity.
- 2. Tourism and economic impact:** Cultural zones are major attractions for tourists, drawing visitors from around the world. This, in turn, generates employment opportunities, boosting local businesses, and supporting the hospitality industry.
- 3. Fostering community pride and identity:** Cultural zones serve as gathering places for local residents, providing a sense of community pride and identity.
- 4. Supporting artistic expression and creativity:** Cultural zones often act as hubs for artistic expression, showcasing various art forms such as music, theater, visual arts, and literature.

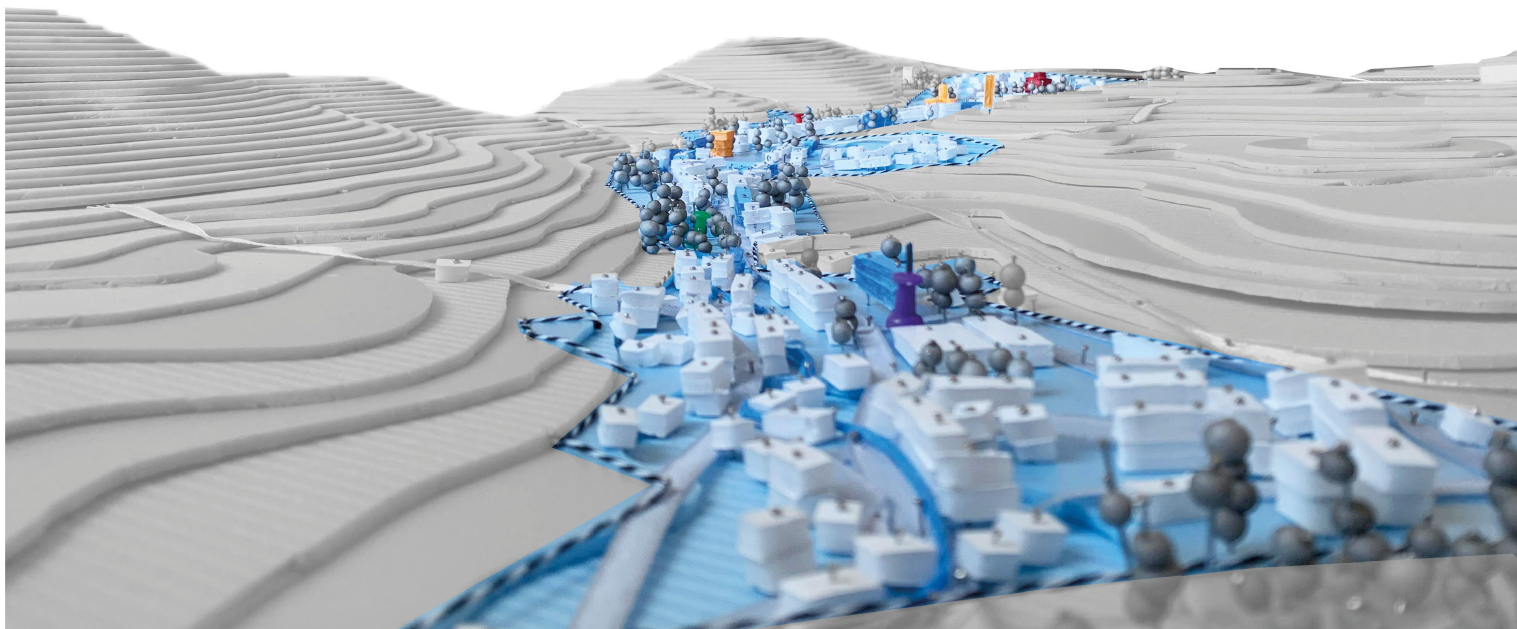
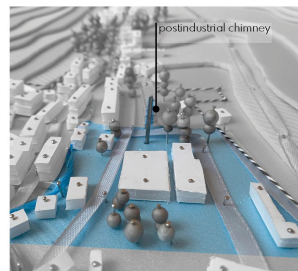


POSTINDUSTRIAL ZONE



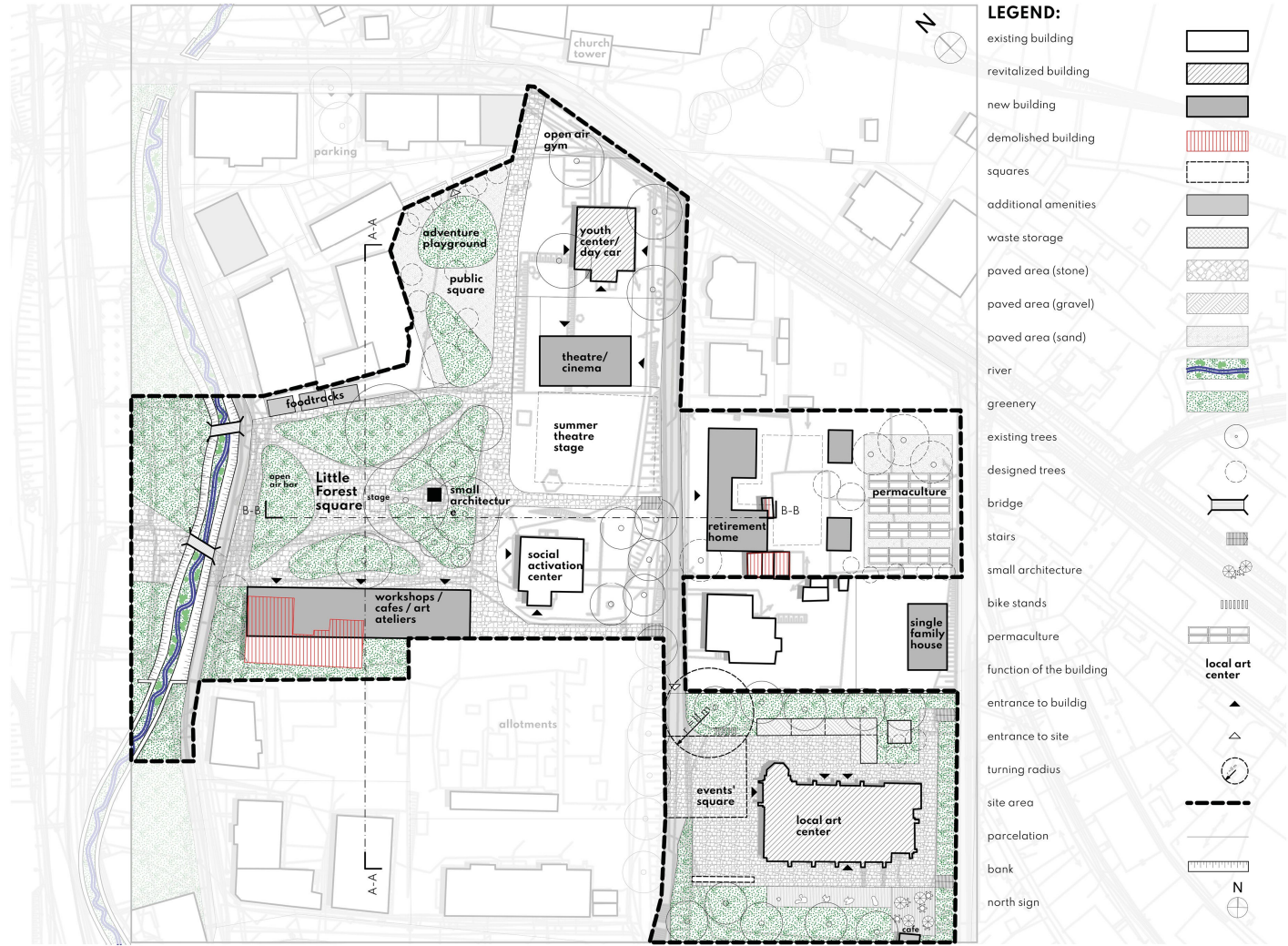
Revitalizing postindustrial zones in cities is important for several reasons:

- 1. Economic revitalization:** Postindustrial areas often suffer from economic decline and job loss due to the decline of traditional industries.
- 2. Urban regeneration:** Revitalization projects can breathe new life into these areas, transforming them into vibrant, livable spaces. This can include converting old factories into mixed-use developments, creating parks and green spaces.
- 3. Sustainable development:** Revitalization projects prioritize environmentally friendly design, energy-efficient buildings, and the use of renewable energy sources.
- 4. Local community participation:** Revitalization provides an opportunity for community engagement allowing them to have a say in shaping the future of their neighborhoods. This participatory approach promotes social inclusion, strengthens community bonds, and ensures that the revitalization benefits all residents, including marginalized groups.

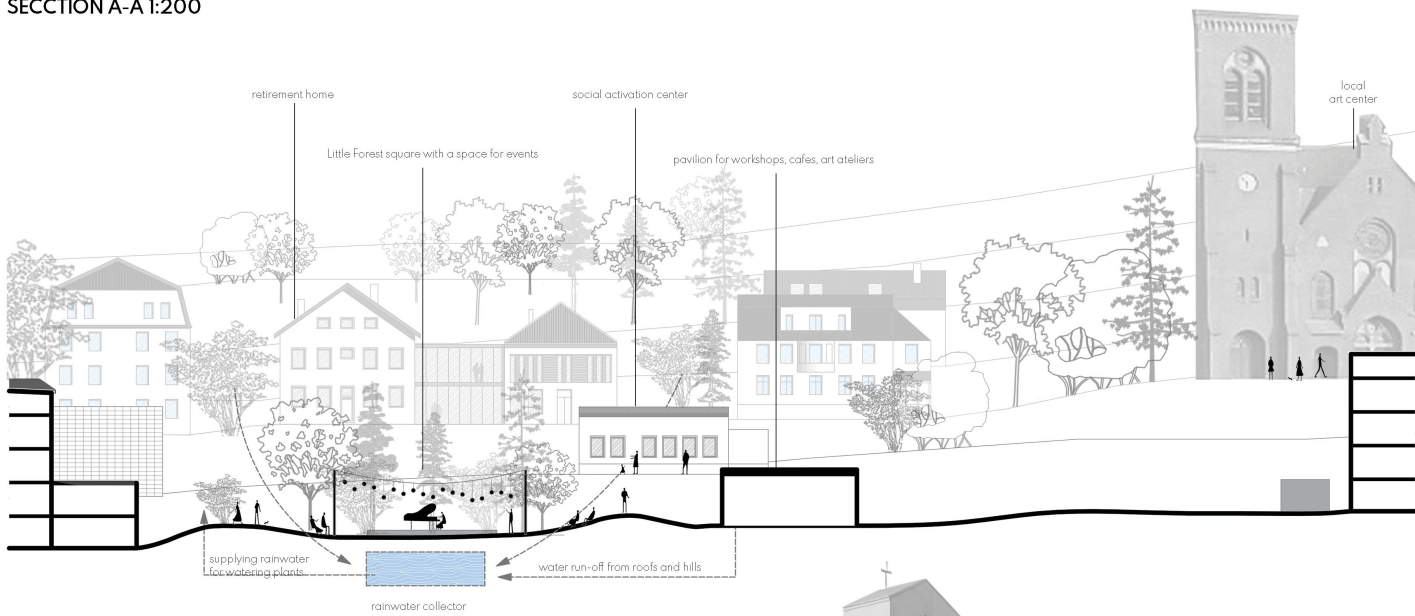


Revitalization of Podgórze district in Wałbrzych

SELECTED URBAN DETAIL OF CULTURAL ZONE 1:500



SECTION A-A 1:200



SECTION B-B 1:200

